

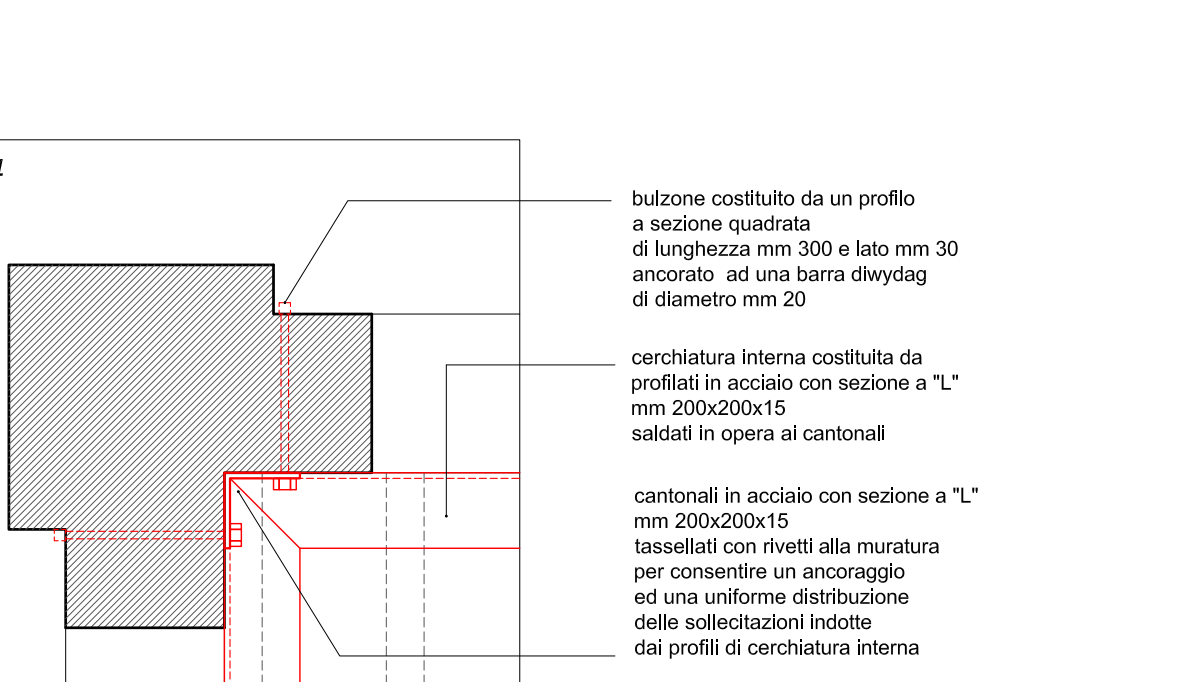
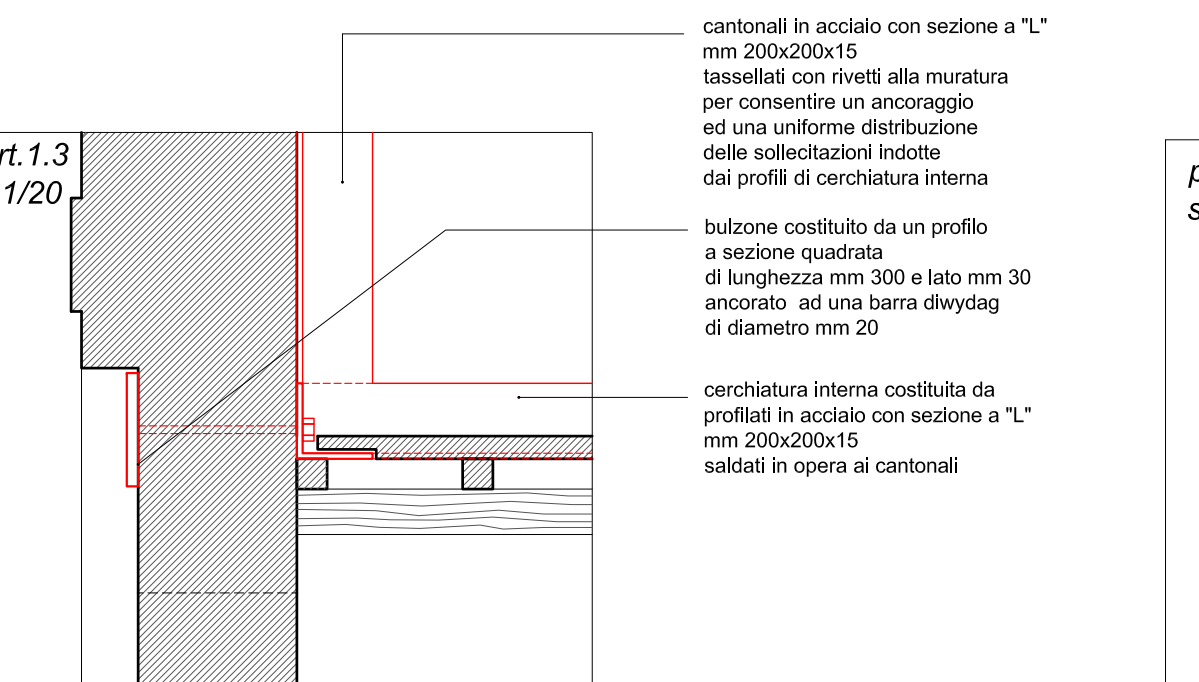
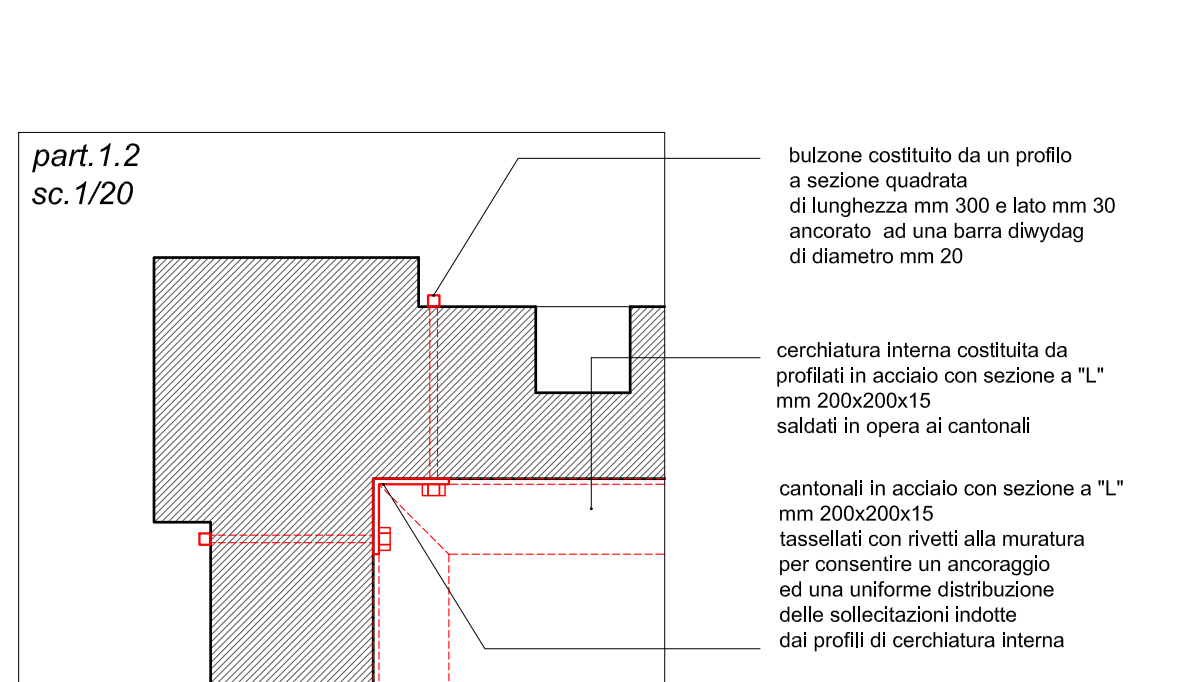
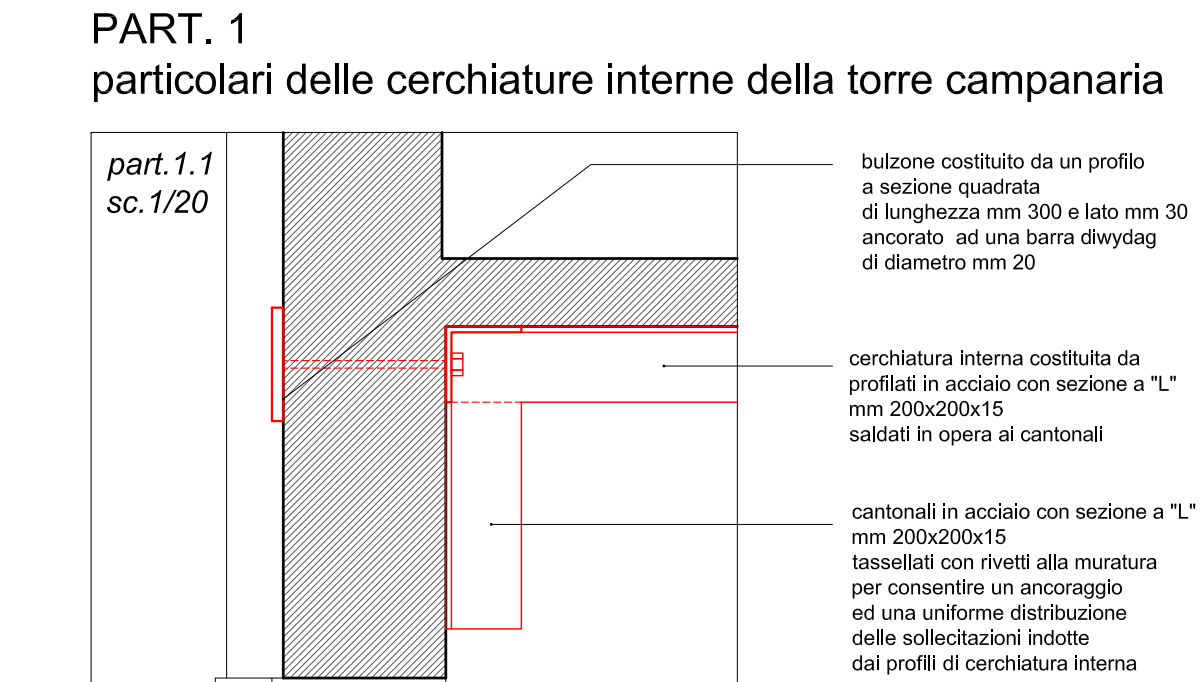
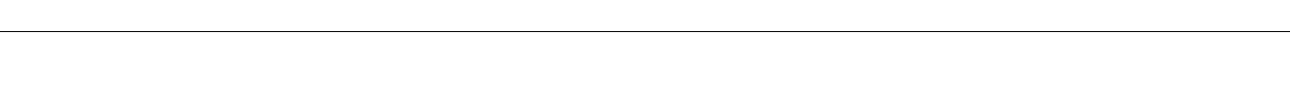
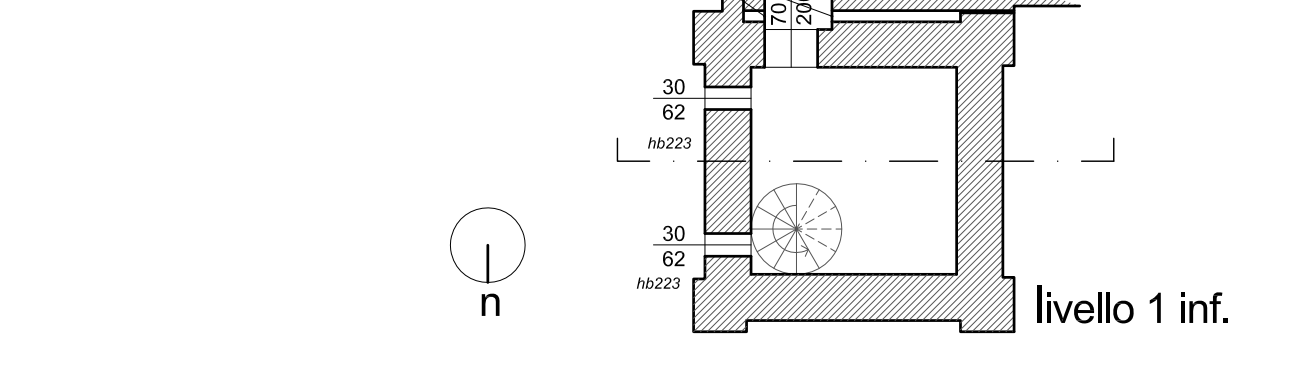
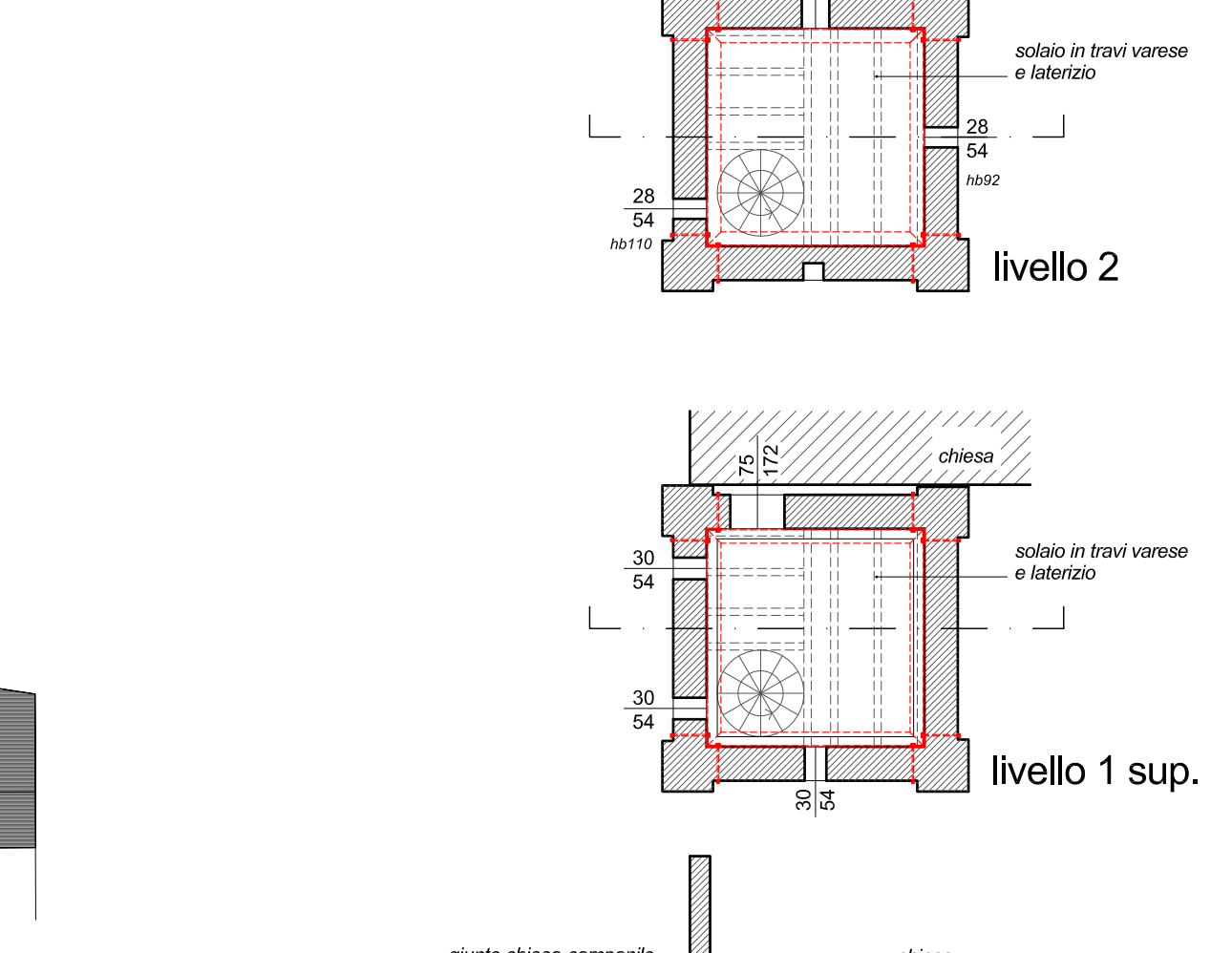
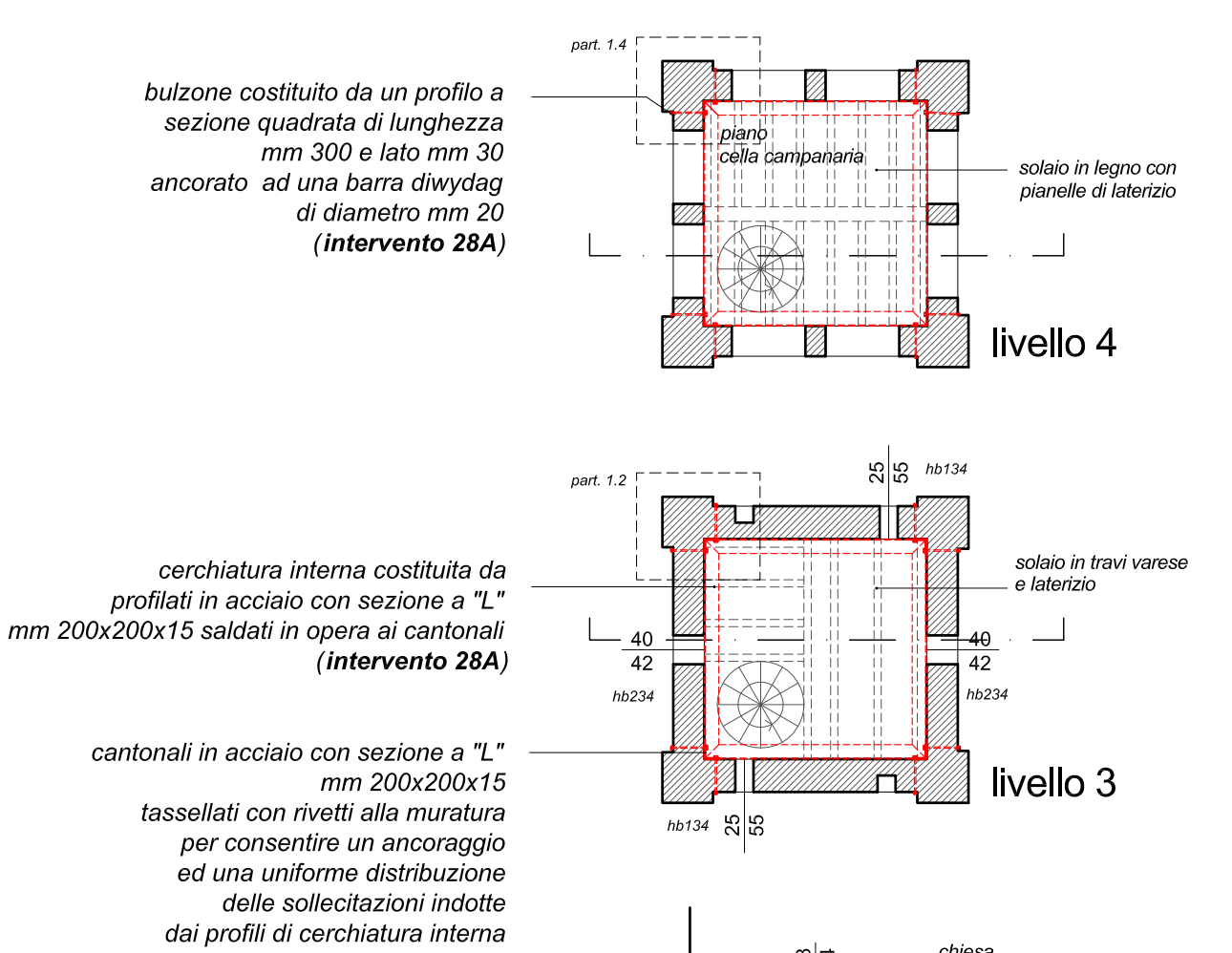
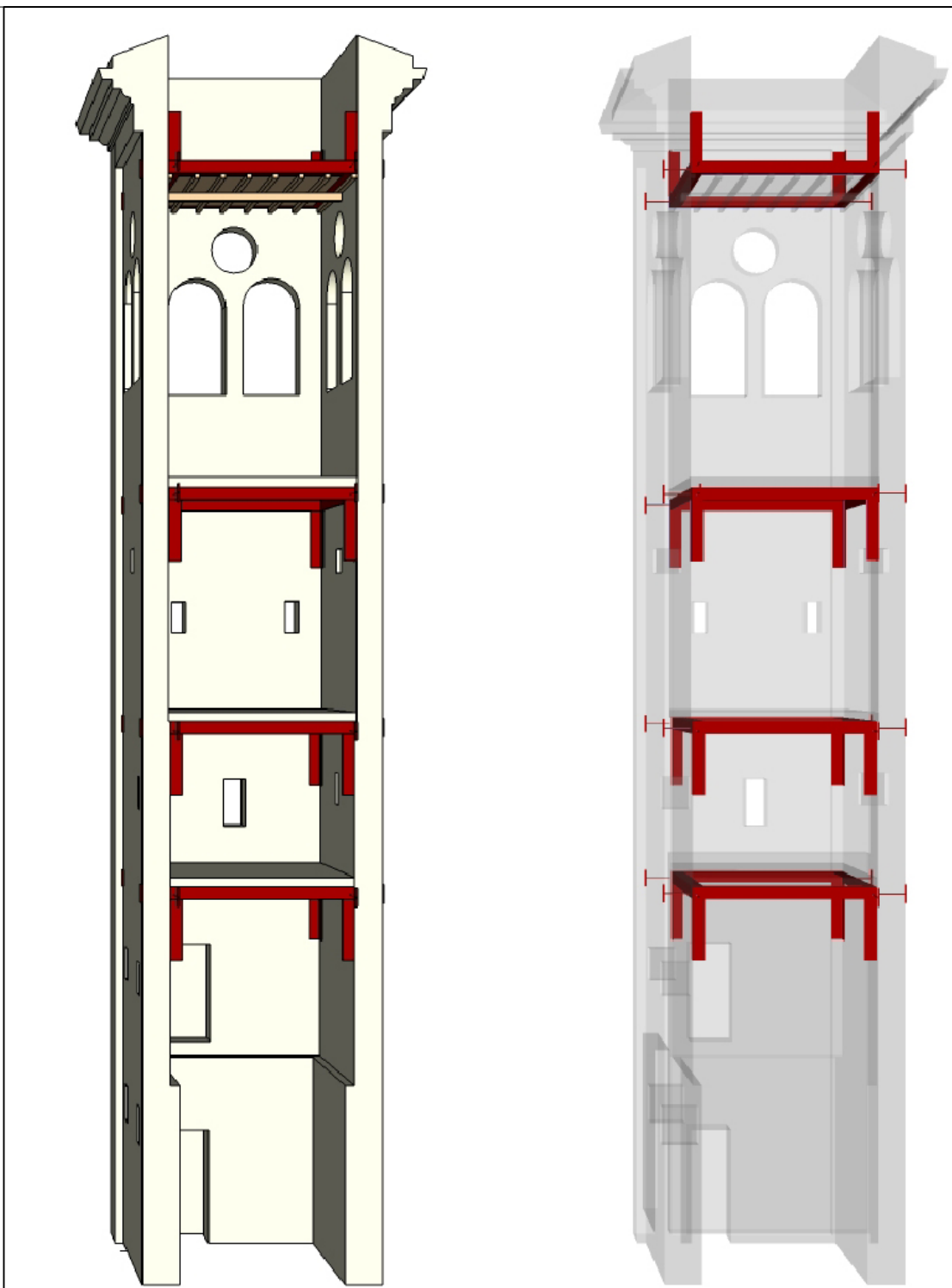
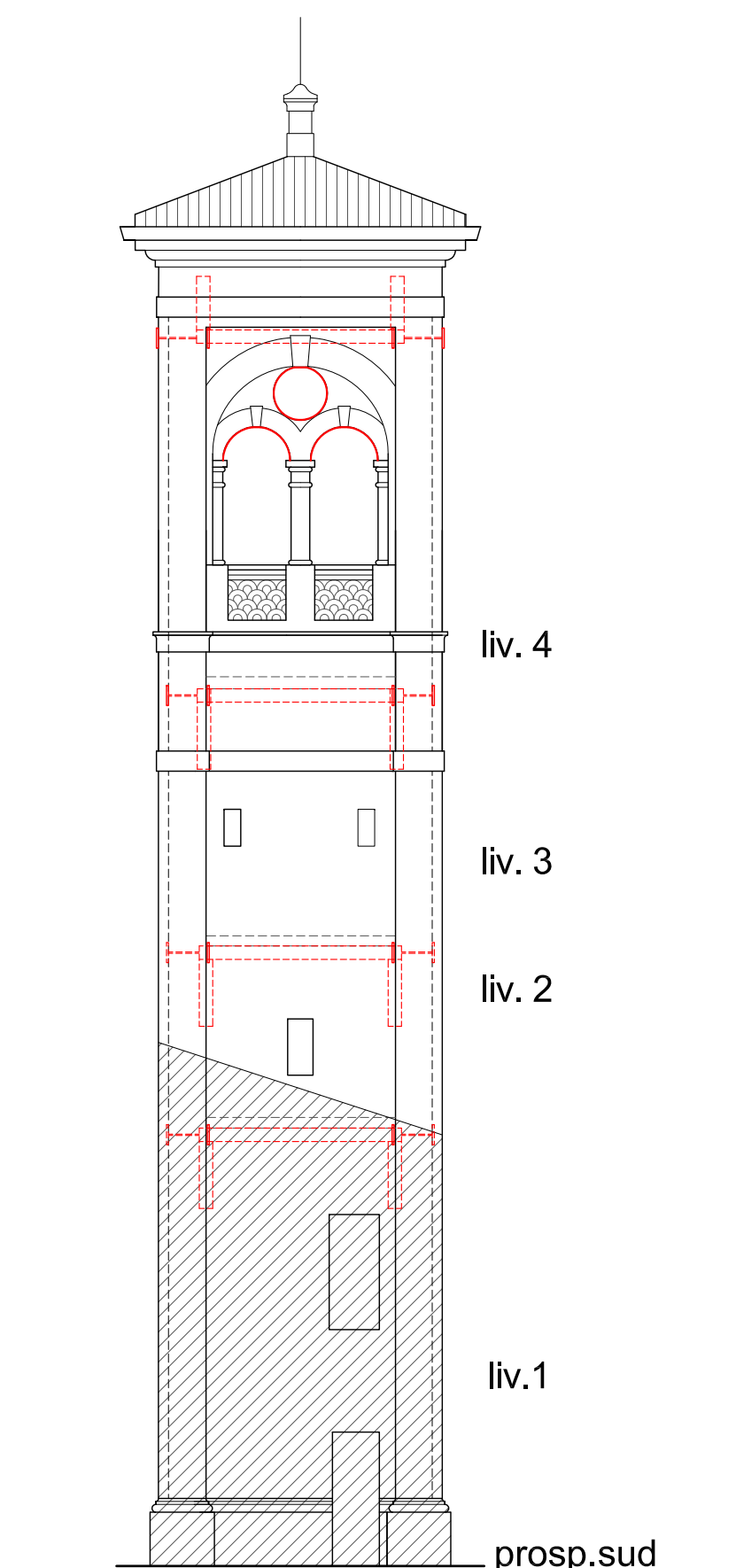
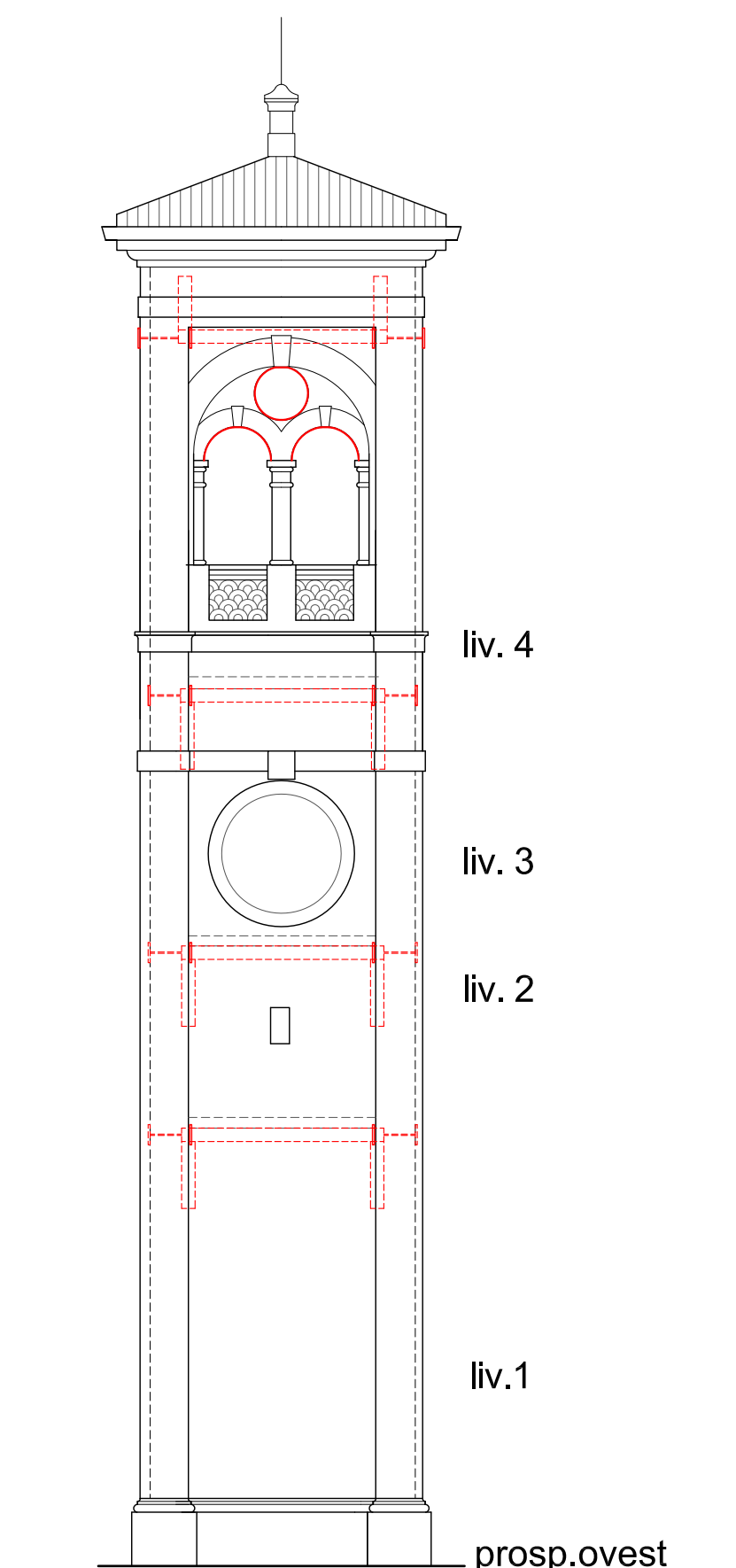
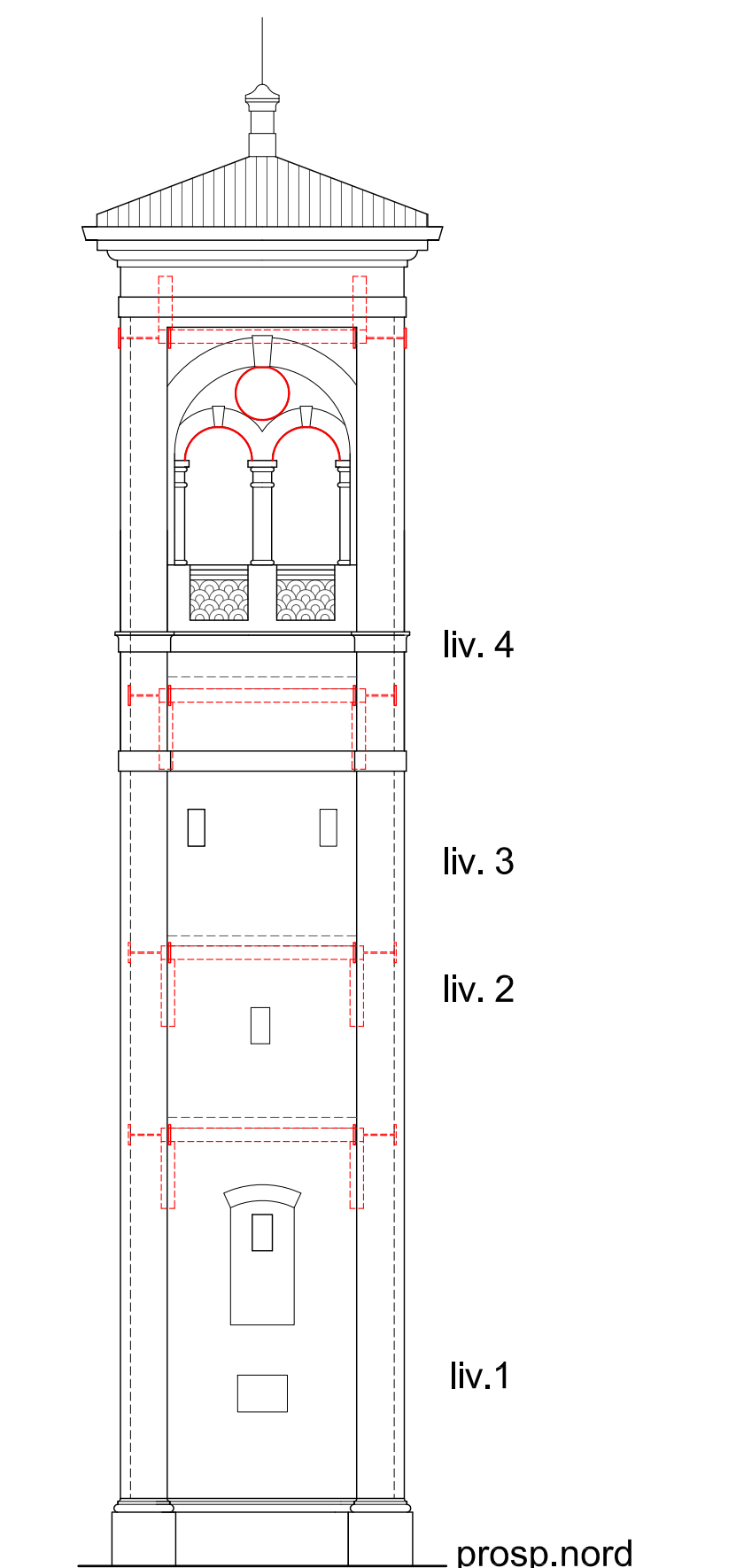
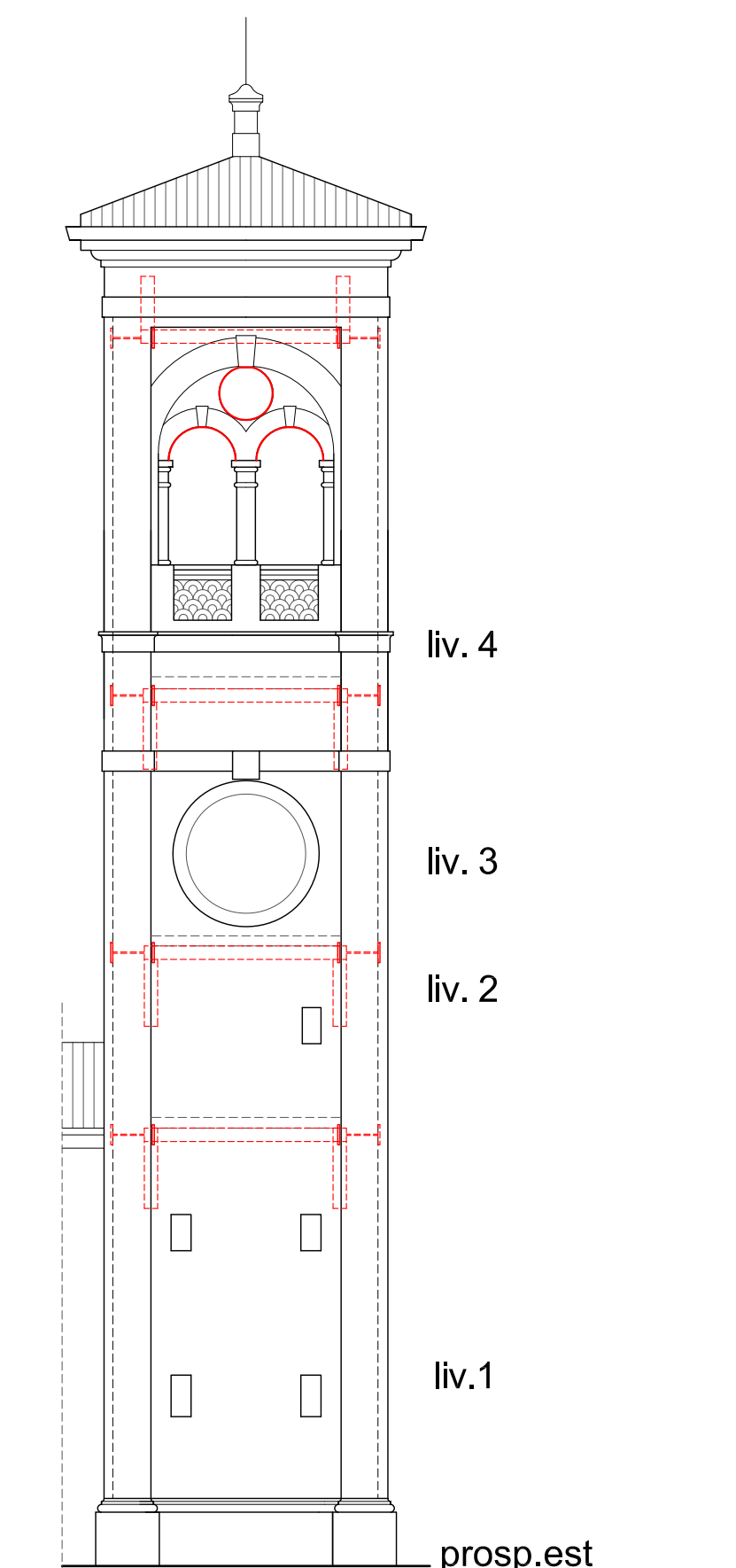
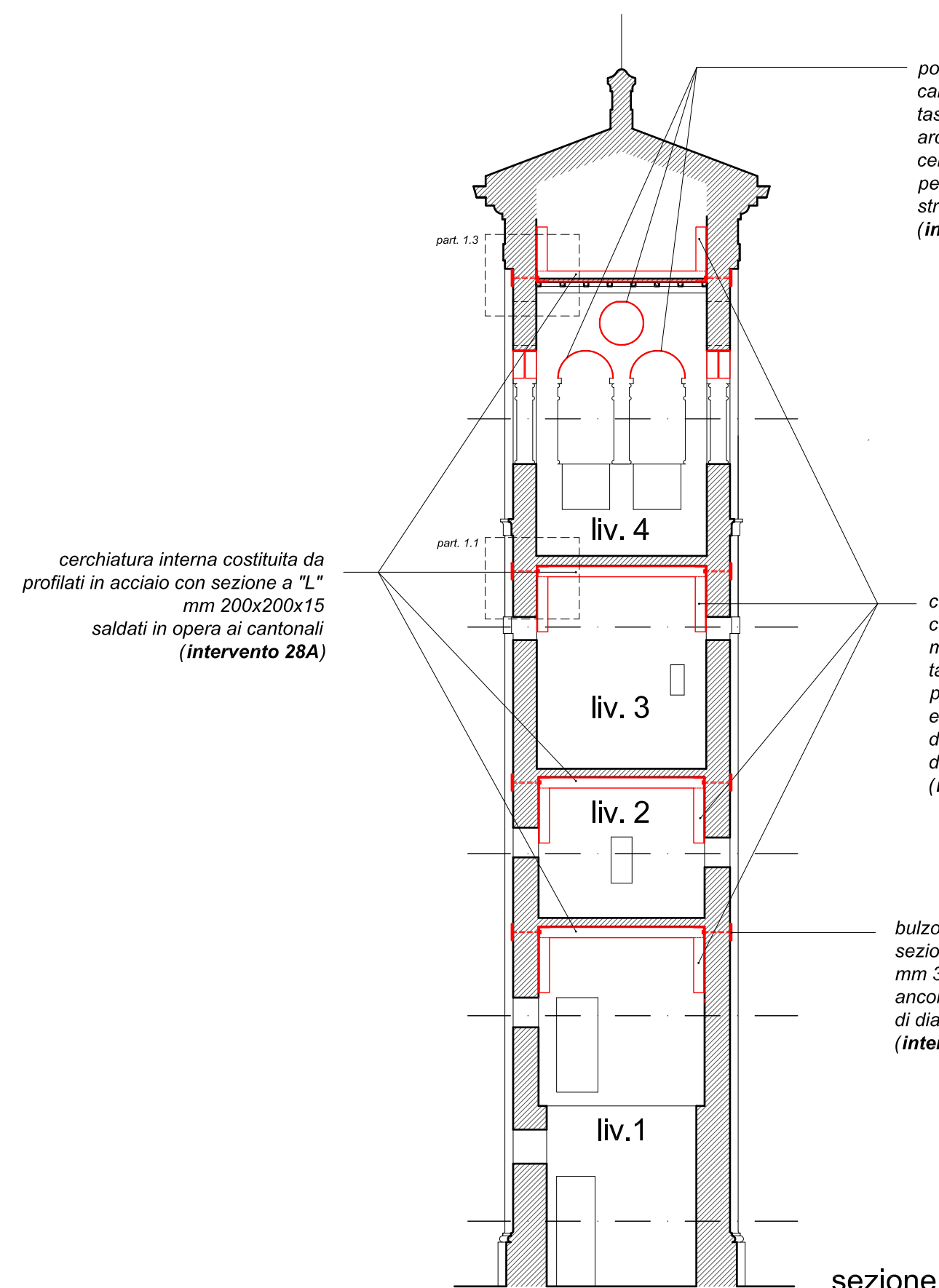
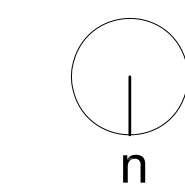
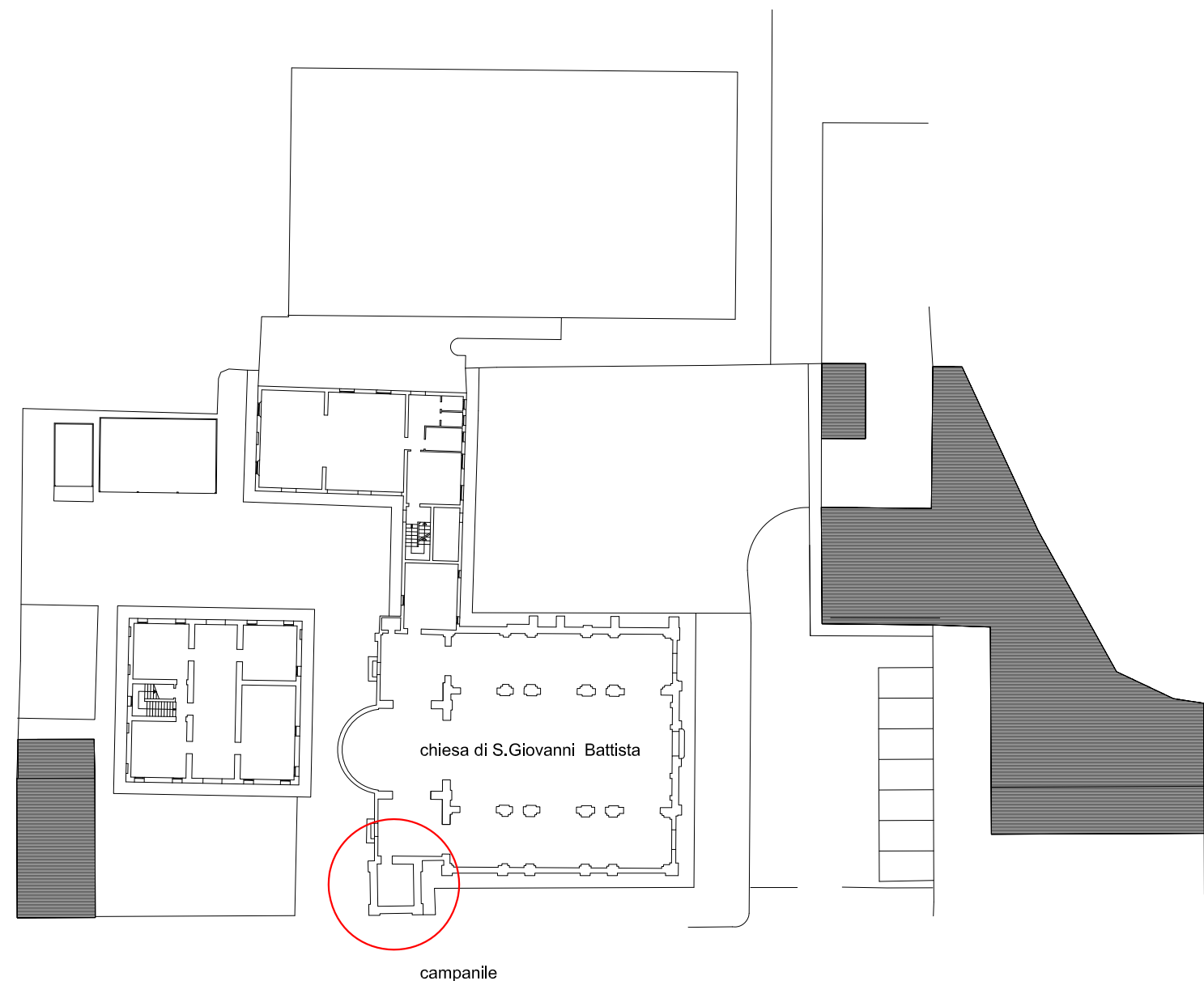
**PARROCCHIA DI SAN GIOVANNI BATTISTA
COMUNE DI RAVARINO
PROVINCIA DI MODENA**

**CHIESA DI SAN GIOVANNI BATTISTA
PROGETTO ESECUTIVO
PER INTERVENTI DI RIPARAZIONE CON
RAFFORZAMENTO LOCALE**

**TAVOLA
PROGETTO INTERVENTI
opere di carpenteria metallica (campanile)**

PROGETTISTA ARCHITETTURE SRL	COMMITTENTE PARROCCHIA DI SAN GIOVANNI BATTISTA	DATA ottobre 2013
VIA DEI TINTORI 10 41121 MODENA	VIA ROMA 41017 RAVARINO (MO)	SCALA 1:100
ING. BRINGHENTI ALBERTO		N. TAVOLA 04

NB.
- TUTTI GLI INTERVENTI METALLICI SONO REVERSIBILI
IN QUANTO AMOVIBILI



simulazione fotografica del posizionamento dei paletti capochiave

